

FLOOR FRAMING PLAN 3 (250.3794) ELEV. D

SCALE: 1/4"=1'

FRAMING NOTES

1. THE SPECIFICATIONS AND NOTES ON SHEET S01, THE TYPICAL STRUCTURAL DETAILS ON ALL SHEETS, AND THE FOLLOWING NOTES APPLY TO THE WORK OF THE ROUGH WALL FRAMING SHALL BE PER DETAIL 1/504.
2. FOR 10' PLATE OPTION.
3. EXTERIOR WALLS AT 1'-0" STORY USE 2X4 @ 24" O.C. UNLESS INDICATED OTHERWISE.
4. INTERIOR WALLS 2X4 STUDS OR 2X4 @ 16" O.C. UNLESS INDICATED OTHERWISE.
5. SHEAR WALLS SHALL BE INSTALLED AT EITHER FACE OF WALL AS LONG AS MINIMUM 4'-0" CLEARANCE IS MAINTAINED FROM THE FACE OF THE WALL.
6. ALL BEAMS SHALL BE INSTALLED ON TOP OF JOISTS UNLESS OTHERWISE INDICATED.
7. ALL JOISTS SHALL BE INSTALLED ON TOP OF BEAMS UNLESS OTHERWISE INDICATED.
8. ALL JOISTS SHALL BE INSTALLED ON TOP OF BEAMS UNLESS OTHERWISE INDICATED.
9. ALL JOISTS SHALL BE INSTALLED ON TOP OF BEAMS UNLESS OTHERWISE INDICATED.
10. ALL JOISTS SHALL BE INSTALLED ON TOP OF BEAMS UNLESS OTHERWISE INDICATED.
11. ALL JOISTS SHALL BE INSTALLED ON TOP OF BEAMS UNLESS OTHERWISE INDICATED.
12. ALL JOISTS SHALL BE INSTALLED ON TOP OF BEAMS UNLESS OTHERWISE INDICATED.
13. ALL JOISTS SHALL BE INSTALLED ON TOP OF BEAMS UNLESS OTHERWISE INDICATED.
14. ALL JOISTS SHALL BE INSTALLED ON TOP OF BEAMS UNLESS OTHERWISE INDICATED.
15. ALL JOISTS SHALL BE INSTALLED ON TOP OF BEAMS UNLESS OTHERWISE INDICATED.
16. ALL JOISTS SHALL BE INSTALLED ON TOP OF BEAMS UNLESS OTHERWISE INDICATED.
17. ALL JOISTS SHALL BE INSTALLED ON TOP OF BEAMS UNLESS OTHERWISE INDICATED.
18. ALL JOISTS SHALL BE INSTALLED ON TOP OF BEAMS UNLESS OTHERWISE INDICATED.
19. ALL JOISTS SHALL BE INSTALLED ON TOP OF BEAMS UNLESS OTHERWISE INDICATED.
20. ALL JOISTS SHALL BE INSTALLED ON TOP OF BEAMS UNLESS OTHERWISE INDICATED.
21. ALL JOISTS SHALL BE INSTALLED ON TOP OF BEAMS UNLESS OTHERWISE INDICATED.
22. ALL JOISTS SHALL BE INSTALLED ON TOP OF BEAMS UNLESS OTHERWISE INDICATED.

FRAMING LEGEND

1. INDICATES RECURRING FRAMING MEMBERS AS SHOWN BELOW.
2. CANT. INDICATES CANTILEVERED RECURRING FRAMING MEMBER. SEE ABOVE FOR MORE INFORMATION.
3. INDICATES BEARING CONDITION.
4. INDICATES HANGING CONDITION. REFER TO TABLE ON S01.
5. SHEAR WALL OUTLINES INDICATE SHEAR WALL TYPE, LOCATION AND ANCHOR BOLT SCHEDULE FOR MORE INFORMATION.
6. 4'-0"/5050/5'-0" (MIN. SHEAR LENGTH) / (MAX. SHEAR LENGTH) INDICATES SHEAR WALL APPLIED TO SHEAR WALL INCLUDING ABOVE JOISTS OR SHEAR TRANSFER AT BOTTOM FLUTE ALONG FULL LENGTH OF WALL.
7. INDICATES POST AND SIMPSON HOLDING ANCHOR/STRAP. SEE DETAIL SECTION B ON S04 AND 1'-3" ON S01.
8. DETAIL # INDICATES DETAIL NUMBER AND SHEET NUMBER INDICATED.
9. STRUTTING BRACE REFER TO DETAIL NUMBER AND SHEET NUMBER INDICATED.

SHEAR SCHEDULE

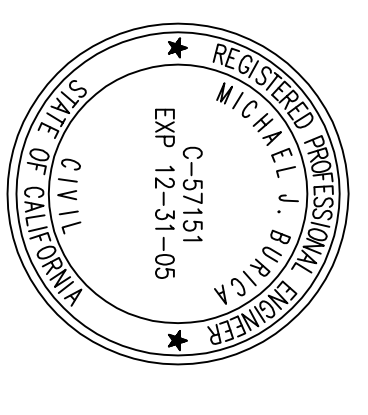
NO.	SHEAR	CD	A.C.B.	A.C.D.	A.S.C.D.
1	6	4	3	2	1
2	3/8"	3/8"	3/8"	3/8"	1/2"
3	3/8"	3/8"	3/8"	3/8"	1/2"
4	3/8"	3/8"	3/8"	3/8"	1/2"
5	3/8"	3/8"	3/8"	3/8"	1/2"
6	3/8"	3/8"	3/8"	3/8"	1/2"
7	3/8"	3/8"	3/8"	3/8"	1/2"
8	3/8"	3/8"	3/8"	3/8"	1/2"
9	3/8"	3/8"	3/8"	3/8"	1/2"
10	3/8"	3/8"	3/8"	3/8"	1/2"
11	3/8"	3/8"	3/8"	3/8"	1/2"
12	3/8"	3/8"	3/8"	3/8"	1/2"
13	3/8"	3/8"	3/8"	3/8"	1/2"
14	3/8"	3/8"	3/8"	3/8"	1/2"
15	3/8"	3/8"	3/8"	3/8"	1/2"
16	3/8"	3/8"	3/8"	3/8"	1/2"
17	3/8"	3/8"	3/8"	3/8"	1/2"
18	3/8"	3/8"	3/8"	3/8"	1/2"
19	3/8"	3/8"	3/8"	3/8"	1/2"
20	3/8"	3/8"	3/8"	3/8"	1/2"
21	3/8"	3/8"	3/8"	3/8"	1/2"
22	3/8"	3/8"	3/8"	3/8"	1/2"
23	3/8"	3/8"	3/8"	3/8"	1/2"
24	3/8"	3/8"	3/8"	3/8"	1/2"
25	3/8"	3/8"	3/8"	3/8"	1/2"
26	3/8"	3/8"	3/8"	3/8"	1/2"
27	3/8"	3/8"	3/8"	3/8"	1/2"
28	3/8"	3/8"	3/8"	3/8"	1/2"
29	3/8"	3/8"	3/8"	3/8"	1/2"
30	3/8"	3/8"	3/8"	3/8"	1/2"
31	3/8"	3/8"	3/8"	3/8"	1/2"
32	3/8"	3/8"	3/8"	3/8"	1/2"
33	3/8"	3/8"	3/8"	3/8"	1/2"
34	3/8"	3/8"	3/8"	3/8"	1/2"
35	3/8"	3/8"	3/8"	3/8"	1/2"
36	3/8"	3/8"	3/8"	3/8"	1/2"
37	3/8"	3/8"	3/8"	3/8"	1/2"
38	3/8"	3/8"	3/8"	3/8"	1/2"
39	3/8"	3/8"	3/8"	3/8"	1/2"
40	3/8"	3/8"	3/8"	3/8"	1/2"
41	3/8"	3/8"	3/8"	3/8"	1/2"
42	3/8"	3/8"	3/8"	3/8"	1/2"
43	3/8"	3/8"	3/8"	3/8"	1/2"
44	3/8"	3/8"	3/8"	3/8"	1/2"
45	3/8"	3/8"	3/8"	3/8"	1/2"
46	3/8"	3/8"	3/8"	3/8"	1/2"
47	3/8"	3/8"	3/8"	3/8"	1/2"
48	3/8"	3/8"	3/8"	3/8"	1/2"
49	3/8"	3/8"	3/8"	3/8"	1/2"
50	3/8"	3/8"	3/8"	3/8"	1/2"
51	3/8"	3/8"	3/8"	3/8"	1/2"
52	3/8"	3/8"	3/8"	3/8"	1/2"
53	3/8"	3/8"	3/8"	3/8"	1/2"
54	3/8"	3/8"	3/8"	3/8"	1/2"
55	3/8"	3/8"	3/8"	3/8"	1/2"
56	3/8"	3/8"	3/8"	3/8"	1/2"
57	3/8"	3/8"	3/8"	3/8"	1/2"
58	3/8"	3/8"	3/8"	3/8"	1/2"
59	3/8"	3/8"	3/8"	3/8"	1/2"
60	3/8"	3/8"	3/8"	3/8"	1/2"
61	3/8"	3/8"	3/8"	3/8"	1/2"
62	3/8"	3/8"	3/8"	3/8"	1/2"
63	3/8"	3/8"	3/8"	3/8"	1/2"
64	3/8"	3/8"	3/8"	3/8"	1/2"
65	3/8"	3/8"	3/8"	3/8"	1/2"
66	3/8"	3/8"	3/8"	3/8"	1/2"
67	3/8"	3/8"	3/8"	3/8"	1/2"
68	3/8"	3/8"	3/8"	3/8"	1/2"
69	3/8"	3/8"	3/8"	3/8"	1/2"
70	3/8"	3/8"	3/8"	3/8"	1/2"

GENERAL NOTES

1. ALL FIELD WALLING OF FINISH SHALL BE 12" O.C.
2. USE THE "NO SHEAR" FRAMING SCHEDULE AT ALL NON-SHEAR WALLS.
3. ALL SHEARING EDGES SHALL BE BLOCKED.
4. FRAMING AT ADDING PANEL EDGES SHALL BE 3" INCH NOMINAL OR WIDER AND WALLS SHALL BE STIFFERED WHERE WALLS ARE SPACED 3 INCHES (OR LESS) ON CENTER.
5. A9A STRUCT 1 RATED SHEATHING.
6. SOLE PLATE WALLS SHALL BE STIFFERED WHERE SPACING IS 4" O.C. OR LESS.
7. WALLING FROM FIRST BLOCKING TO WALL FINISH SHALL BE STIFFERED WHERE SPACING IS 4" O.C. OR LESS.

PBA
STRUCTURAL ENGINEERING
116 East Knoll Avenue
Anaheim, CA 92814
Tel: 714.634.2800
Fax: 714.634.9004

KB HOME
BRIDGEPORT TRACT 30295
RIVERSIDE COUNTY, CA
FLOOR FRAMING PLAN 3: ELEV. D



JOB NO.: 114 KB
FILE NAME: 114 KB S3.2
PROJ. ENGR: MJB
DRAWN BY: PV
ORIGINAL ISSUE: 05/25/04
S3.2
250.3794